



## 6 Achilpa Close Bangor NSW

4 2 2

This beautiful large home is sitting in a peaceful quiet cul-de-sac backing onto a bush land reserve which flows down towards the Woronora River.

This home is filled with natural light with space being of abundance boasting 4 large living area's spread over 4 levels. Space for the entire family and then some with endless possibilities.

A gorgeous designer kitchen which overlooks the stunning 9.5 metre in-ground swimming will make entertaining a delight.

- 4 Bedrooms
- Master with en-suite
- 2 Car Garage
- 2 Bathrooms

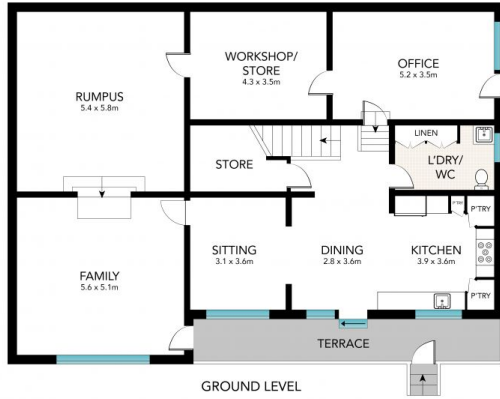
**Price** : \$ 1,260,000  
**Land Size** : 605 sqm  
**View** : <https://www.dashamcgeeproperty.com.au/sale/nsw/sutherland/bangor/residential/house/6186965>



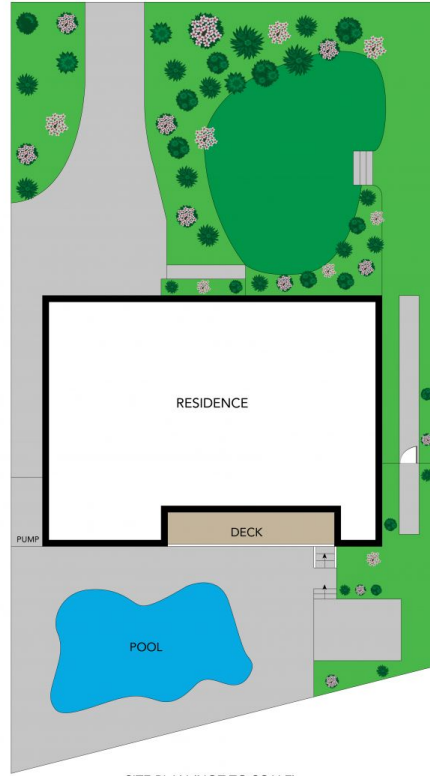
**Dasha McGee**  
0433 044 240



ENTRY LEVEL



GROUND LEVEL



SITE PLAN (NOT TO SCALE)

INT: 293 m<sup>2</sup>  
EXT: 544 m<sup>2</sup>



This floor plan was prepared by WWW.CRYINGOUTLOUD.COM.AU for illustration purposes only. This document does not constitute any part of an offer or contract. Dimensions are approximate only.

6 Achilpa Close, Bangor