

21 The Crescent Woronora NSW

3 2 2

This lovely home is located in a whisper quiet location, so if it's peace and tranquillity your after? look no further.

Enjoy sitting on your front terrace overlooking your garden, pretty picket fence and the tranquil running stream that runs through the middle of the street.

Boasting high ceilings downstairs with a good sized lounge room complete with a wood fire place and air-conditioning. The dining room is an impressive size big enough for the largest of families and all 3 bedrooms are large with built-in wardrobes.

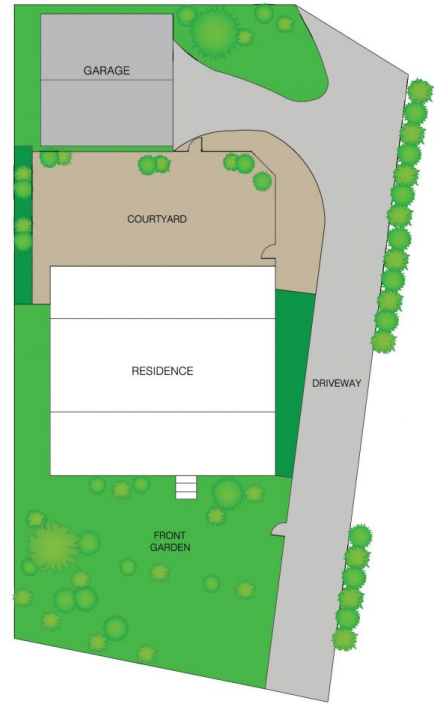
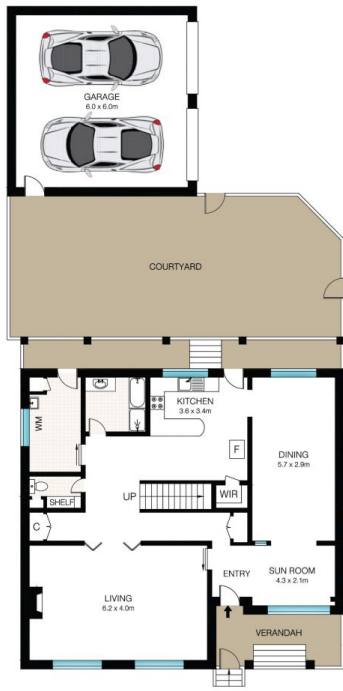
- Air-conditioning
- Fireplace
- High ceilings
- Large bedrooms

Price : \$ 825,000

View : <https://www.dashamcgeeproperty.com.au/sale/nsw/sutherland/woronora/residential/house/6186970>



Dasha McGee
0433 044 240



This Floor Plan was prepared by WWW.CRYINGOUTLOUD.COM.AU for illustration purposes only. This document does not constitute any part of an offer or contract. Dimensions are approximate only. Copyright © 2018 Crying Out Loud. All Rights Reserved.

INT: 193m²
EXT: 76m²



The Crescent Woronora