



107 Prince Edward Park Road Woronora NSW

4 🏠 3 🚗 2 🚗

This lovely deep waterfront home comes complete with its own jetty, pontoon and boat ramp with electric winch. Fish from your own backyard or take the boat for a spin on the Georges River & Botany Bay. This is a wonderful holiday lifestyle on the beautiful Woronora River, yet only minutes to Sutherland train Station, schools and shopping centres.

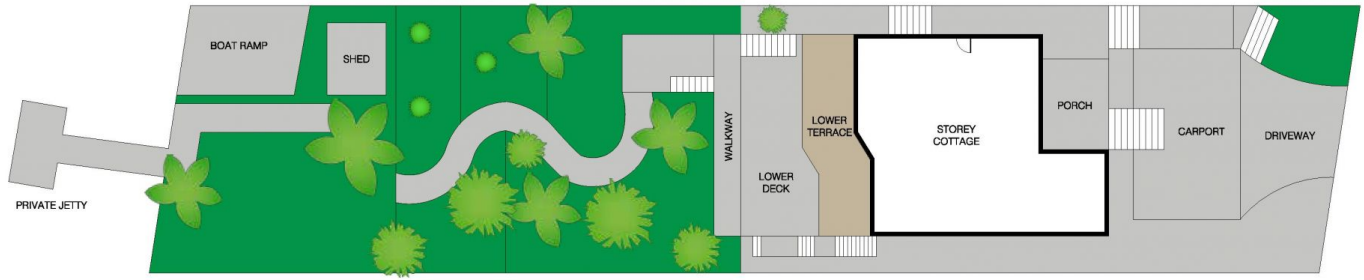
Price : \$ 1,550,000
Land Size : 770 sqm
View : <https://www.dashamcgeeproperty.com.au/sale/nsw/sutherland/woronora/residential/house/6186987>

There's plenty of living space in this large home comprising of a few living spaces, home office, open plan kitchen and dining and entertainment decks. Beautiful river and valley views are seen from most of the rooms. The property is also North facing and is sun drenched all day long.

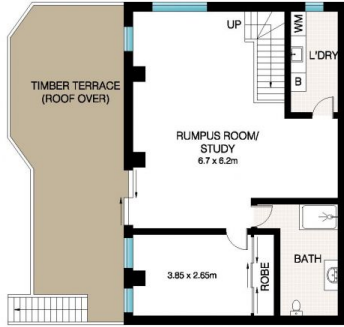
There is a lovely level lawn area right on the rivers edge, ideal for entertaining family and friends or simply for relaxing by the river. Ideal for boating, fishing, swimming or kayaking.



Dasha McGee
0433 044 240



SITE PLAN (NOT TO SCALE)



LOWER FLOOR



UPPER FLOOR



This Floor Plan was prepared by WWW.CRYINGOUTLOUD.COM.AU for illustration purposes only. This document does not constitute any part of an offer or contract. Dimensions are approximate only. Copyright c 2019 Crying Out Loud. All Rights Reserved.

107 Prince Edward Park Road, Woronora

INT: 207m²
EXT: 83m²

