



9/616-618 Princess Highway Kirrawee NSW

2 1 1

A lovely apartment located on the ground floor offering open plan living, new flooring throughout and freshly painted. The balcony is a great size for entertaining and BBQ's. Complete with a lock up garage with internal access.

Price : \$ 635,000

View : <https://www.dashamcgeeproperty.com.au/sale/nsw/sutherland/kirrawee/residential/apartment/6186988>

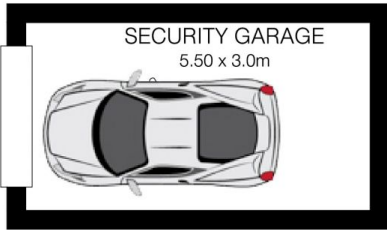
Walking distance to train station, shops & cafes and the new South Village.

ENTRY VIA FLORA STREET

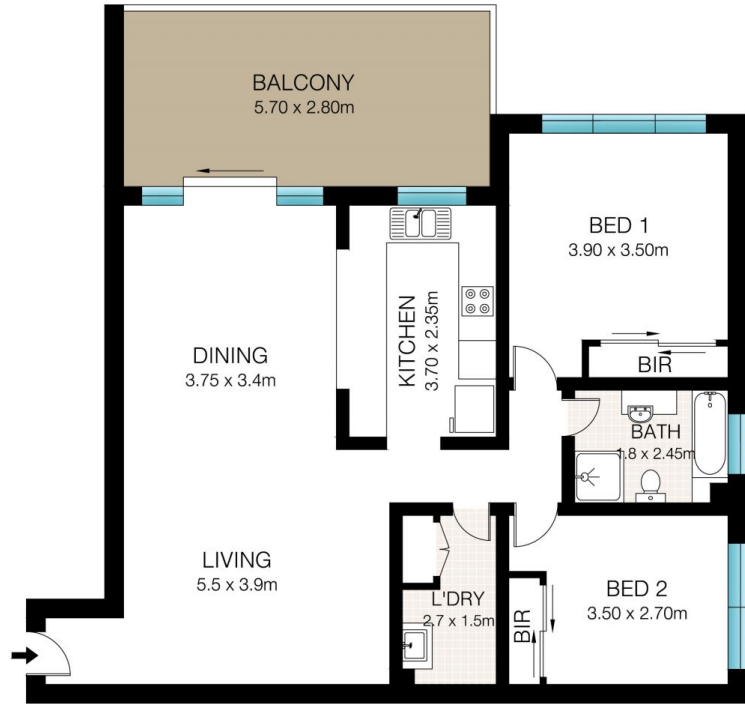
- 2 Bedrooms with Built-ins
- Air Conditioning
- Internal Laundry
- Modern Bathroom
- New flooring throughout
- Open plan living



Dasha McGee
0433 044 240



LOWER GROUND



GROUND FLOOR



INT: 96m²
EXT: 17m²



This Floor Plan was prepared by WWW.CRYINGOUTLOUD.COM.AU for illustration purposes only. This document does not constitute any part of an offer or contract. Dimensions are approximate only. Copyright ©2017 Crying Out Loud. All Rights Reserved.

9/616-618 Princess Highway Kirrawee