



12 Tay Place Woronora NSW

3 1 1

This lovely family home is nestled in a quiet cul-de-sac location offering a peaceful setting and a great child friendly backyard.

Split level living with lounge and dining room opening out onto a lovely deck which overlooks the lovely two tiered level backyard. There is an extra games/rumpus room which opens to the backyard.

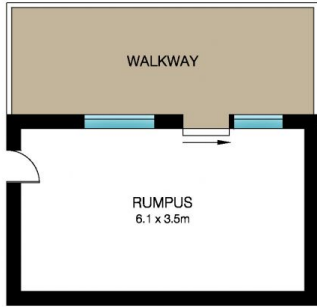
- 3 bedrooms
- 1 bathroom
- Lounge with wood fire place
- Air-conditioning
- Kitchen & dining
- Games/rumpus room
- Outdoor deck
- Level grassy yard

Price : \$ 815,000

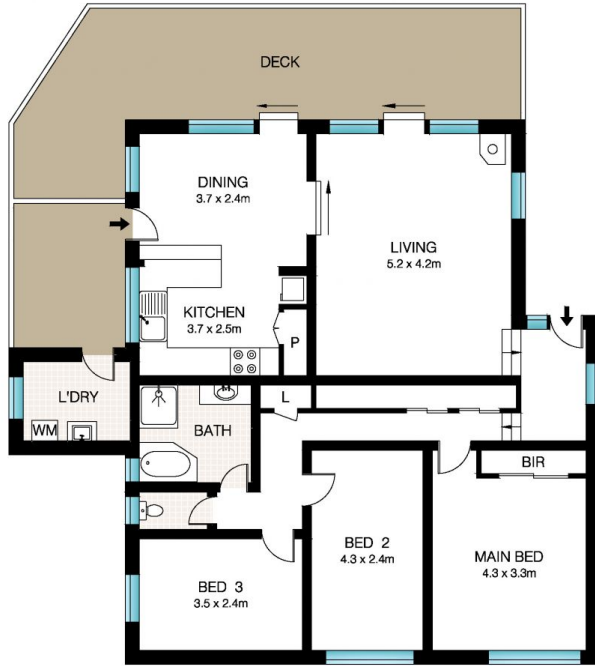
View : <https://www.dashamcgeeproperty.com.au/sale/nsw/sutherland/woronora/residential/house/6186989>



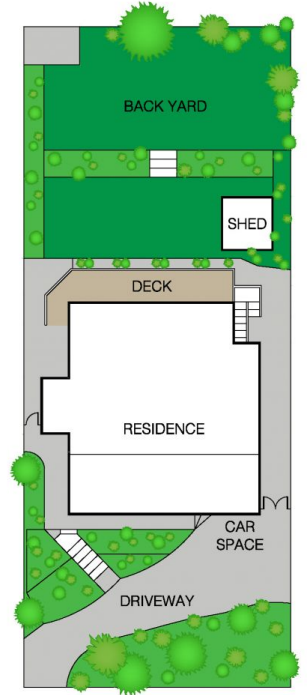
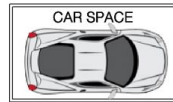
Dasha McGee
0433 044 240



LOWER LEVEL



UPPER LEVEL



SITE PLAN (NOT TO SCALE)



This Floor Plan was prepared by WWW.CRYINGOUTLOUD.COM.AU for illustration purposes only. This document does not constitute any part of an offer or contract. Dimensions are approximate only. Copyright © 2017 Crying Out Loud. All Rights Reserved.

INT: 125m²
EXT: 51m²



12 Tay Place, Woronora