



Level 3/68/1 Riverpark Drive Liverpool NSW

2 1 2

This lovely light filled apartment sits on the banks of the Georges River and parkland foreshore. Commanding views from the 3rd floor with the living area opening to the balcony overlooking trees, parkland and the river.

Price : \$ 370,000

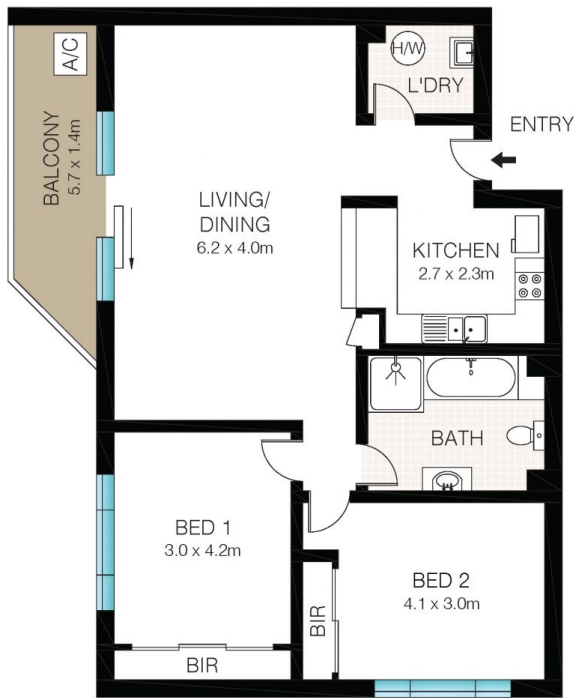
View : <https://www.dashamcgeeproperty.com.au/sale/nsw/liverpool-fairfield/liverpool/residential/unit/7014654>

Close to all that Liverpool has to offer but in a quite location. The complex also features an indoor inground pool, spa and a children's playground.

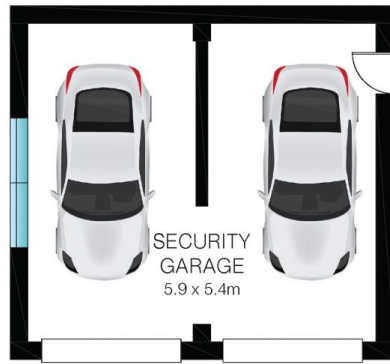
- 2 Bedrooms
- 1 Bathroom
- 2 Car Garage
- Internal Laundry
- Air-conditioning
- On-site inground pool & spa
- On-site children's playground
- On-site car wash bay



Dasha McGee
0433 044 240



LEVEL 3



GROUND



INT: 109m²
EXT: 7m²



This Floor Plan was prepared by WWW.CRYINGOUTLOUD.COM.AU for illustration purposes only. This document does not constitute any part of an offer or contract. Dimensions are approximate only. Copyright ©2022 Crying Out Loud. All Rights Reserved.

68/1 Riverpark Drive, Liverpool