



24 Milton Street North Ashfield NSW

3 1 8

This property is situated in a prime sought after location between Croydon & Ashfield Stations and is sitting on a large 800sqm block of land.

Perfect for owner occupier, investor or future development site.

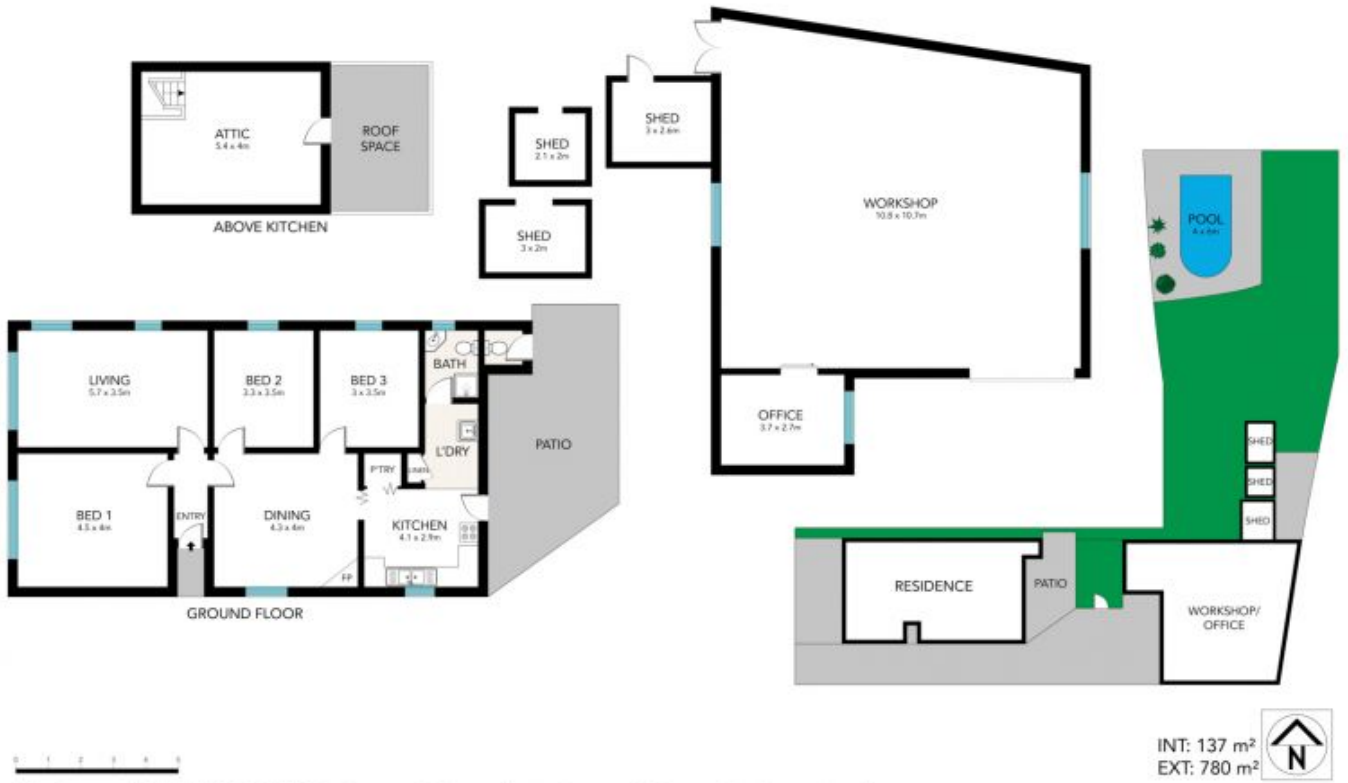
HOUSE. The 3 bedroom Californian bungalow is in good condition consisting of 2 living area's, bathroom, large attic with access, bathroom, laundry & kitchen with a good sized courtyard, brand new kitchen, covered entertainment area and extra toilet. Currently let for \$730 per week.

WORKSHOP & OFFICE. Behind the house there is a operational council approved Mechanical repair workshop with office which has been operating for over 30 years. Rental income \$990 per week. 3 year lease.

Price : By Negotiation
Land Size : 800 sqm
View : <https://www.dashamcgeeproperty.com.au/sale/nsw/inner-west/ashfield/residential/house/7014746>



Dasha McGee
0433 044 240



INT: 137 m²
EXT: 780 m²



This floor plan was prepared by WWW.DRIVINGOUTLOUD.COM.AU for illustration purposes only. This document does not constitute any part of an offer or contract. Dimensions are approximate only.

24 Milton Street North, Ashfield