



261 Prince Edward Park Road Woronora NSW

2 1

This pretty as a picture waterfront cottage comes complete with a jetty, pontoon and it's own private sandy beach. Boasting a large 850 square metres of land that backs onto your own bushland. The property faces North and is filled with sunshine and birdsong all year round. A nature lovers retreat away from all the hustle and bustle but close enough to enjoy the Sydney lifestyle. You can really have it all.

The cottage is character filled with sand-stone featured walls, 2 light filled bedrooms with built-in robes. A wood fireplace is ready for winter nights and a outdoor covered deck is ready for lazy summer days to relax on.

The property is fully fenced ideal for small children and pets with an extensive lawn area leading down to the waters edge.

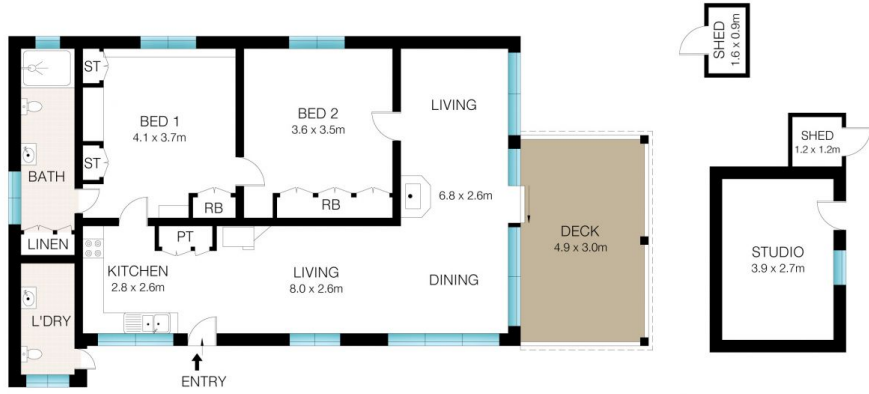
Price : \$ 1,150,000
Land Size : 850 sqm
View : <https://www.dashamcgeeproperty.com.au/sale/nsw/sutherland/woronora/residential/house/7203363>



Dasha McGee
0433 044 240



SITE PLAN (NOT TO SCALE)



0 1 2 3 4 5

This Floor Plan was prepared by WWW.CRYINGOUTLOUD.COM.AU for illustration purposes only. This document does not constitute any part of an offer or contract. Dimensions are approximate only. Copyright © 2022 Crying Out Loud. All Rights Reserved.

INT: 93m²
EXT: 15m²



261 Prince Edward Park Road, Woronora