



9 Wyanbah Road Cronulla NSW

8 🛏 4 🚗 2 🚗

These two separate homes (dual occupancy) are located in the sought after beachside suburb of Cronulla and are within walking distance to beaches, cafes, golf courses, restaurants, shops, schools and the train station.

House 1 - This single level home built in the 1950's having an addition added in 1970 sits in a commanding position on the high side of the street. It features 5 bedrooms, 2 bathrooms and 2 living areas. Its bright, airy and sundrenched all day long.

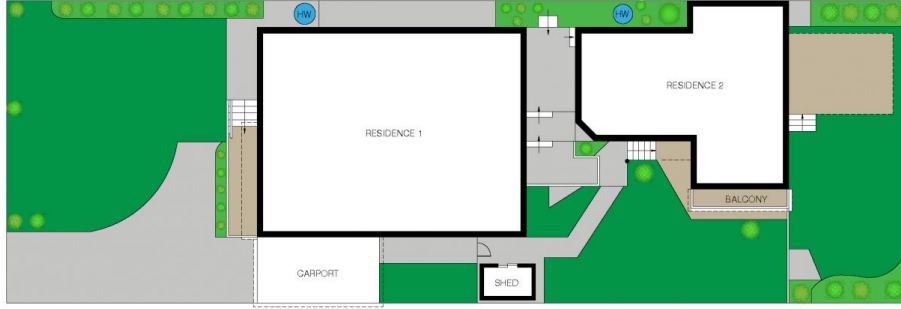
House 2 - sits at the back on the property and is a 2 story, 3 bedroom home with it's own backyard and terrace. This home was added to the property as a dual occupancy in 1990.

This dual occupancy property has many possibilities, such

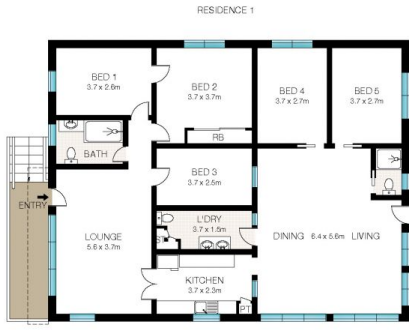
Price : \$ 2,900,000
Land Size : 669 sqm
View : <https://www.dashamcgeeproperty.com.au/sale/nsw/sutherland/cronulla/residential/house/7210543>



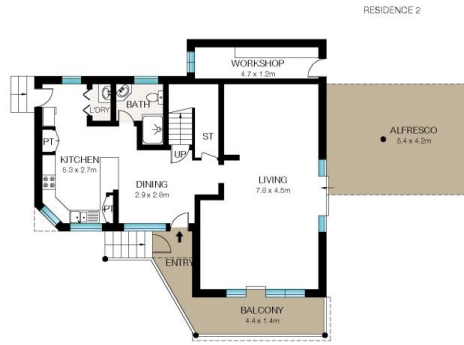
Dasha McGee
0433 044 240



SITE PLAN (NOT TO SCALE)



GROUND LEVEL



GROUND LEVEL



FIRST LEVEL



INT: 265m²
EXT: 46m²



This Floor Plan was prepared by WWW.CRYINGOUTLOUD.COM.AU for illustration purposes only. This document does not constitute any part of an offer or contract. Dimensions are approximate only. Copyright ©2022 Crying Out Loud. All Rights Reserved.

9 Wyanbah Road, Cronulla