



101 Prince Edward Park Road Woronora NSW

4 3 2

This meticulously crafted, architecturally designed home, now gracing its 15th year, showcases soaring ceilings that utilize passive solar principles, inviting abundant natural light into its interior. Conveniently, a double garage at street level provides seamless internal access to the property. The entire residence boasts exquisite hardwood timber flooring, creating a warm and inviting ambiance. With four generously sized bedrooms, each featuring built-in wardrobes, and three stylishly appointed bathrooms, this home offers ample space and comfort. Two spacious living areas enhance the living experience.

The master bedroom, distinguished by its ensuite, opens onto a generous terrace, perfect for moments of relaxation and reflection.

The open-concept designer kitchen is a culinary

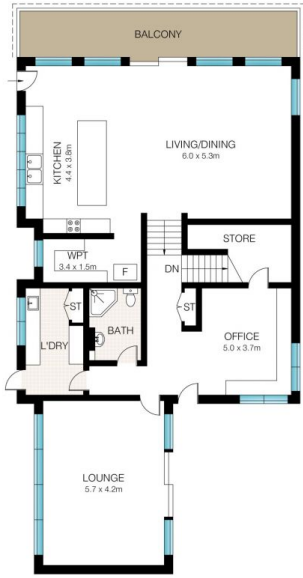
Price : \$ 2,410,000
Land Size : 690 sqm
View : <https://www.dashamcgeeproperty.com.au/sale/nsw/sutherland/woronora/residential/house/7724058>



Dasha McGee
0433 044 240



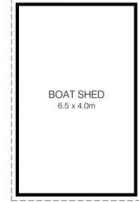
GROUND FLOOR



FIRST FLOOR



SITE PLAN (NOT TO SCALE)



INT: 284m²
EXT: 72m²



This Floor Plan was prepared by WWW.CRYINGOUTLOUD.COM.AU for illustration purposes only. This document does not constitute any part of an offer or contract. Dimensions are approximate only. Copyright © 2023 Crying Out Loud. All Rights Reserved.

101 Prince Edward Park Road, Woronora