



159 Prince Edward Park Road Woronora NSW

3 2 2

This exceptional waterfront property is situated on a level block of land, providing direct street-to-waterfront access. Boasting a jetty, pontoon, and boat ramp, it offers unparalleled convenience for waterfront living. Its north-facing orientation ensures ample natural light throughout the day, allowing residents to enjoy breathtaking views of the river and surrounding bushland.

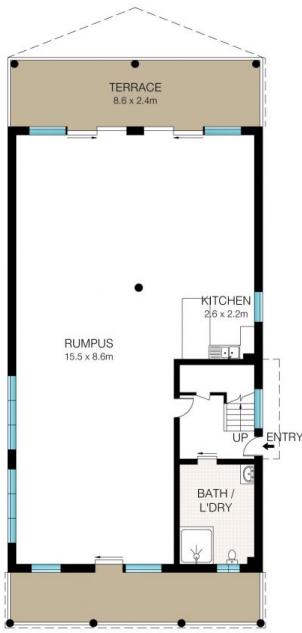
The upper level presents an expansive open-plan layout encompassing the living, dining, and kitchen areas, seamlessly extending to a river-facing deck and sunlit yard-an idyllic setting for relaxation and enjoyment amidst the tranquil riverside ambiance.

On the lower level, a versatile space awaits customization to suit individual needs. Presently configured as a generously sized open-plan rumpus area with a kitchenette

Price : \$ 2,827,000
Land Size : 797 sqm
View : <https://www.dashamcgeeproperty.com.au/sale/nsw/sutherland/woronora/residential/house/7918119>



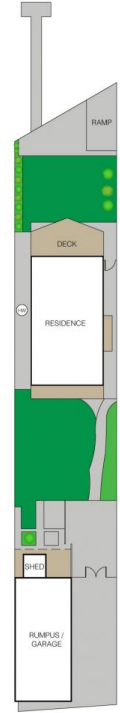
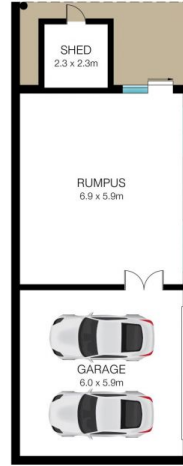
Dasha McGee
0433 044 240



GROUND LEVEL



LEVEL 1



SITE PLAN (NOT TO SCALE)



This Floor Plan was prepared by WWW.CRYINGOUTLOUD.COM.AU for illustration purposes only. This document does not constitute any part of an offer or contract. Dimensions are approximate only. Copyright © 2024 Crying Out Loud. All Rights Reserved.

159 Prince Edward Park Road, Woronora

INT: 350m²
EXT: 94m²

